



Town of Waynesville Comprehensive Plan Implementation Worksession

Worksession

4/28/23



Agenda

- **Welcome & Introductions (5 min)**
- **Presentation (35 min)**
 - Comp Plan Overview
 - Trends / Recent Developments
 - Zoning Framework and Recent UDO Changes
 - Future Land Use Recommendations
 - Future Land Use / Zoning Comparison
 - Density and Standards Options
- **Discussion (50 min)**
- **Public Comments (3 min per speaker)**
- **Next Steps (5 min)**

WAYNESVILLE 2035

PLANNING WITH PURPOSE



Adopted
September, 8
2020

COMPREHENSIVE LAND USE PLAN

- Two year process, 2018-2020
- Built on the previous 2020 Comprehensive Plan
- Involved
 - Board appointed Steering Committee
 - Public Involvement (survey, workshops, focus groups, public hearings)
 - Mapping of current conditions and desired future land use
 - Stewart Consulting
 - Planning Board
 - Board of Aldermen

WAYNESVILLE 2035

PLANNING WITH PURPOSE



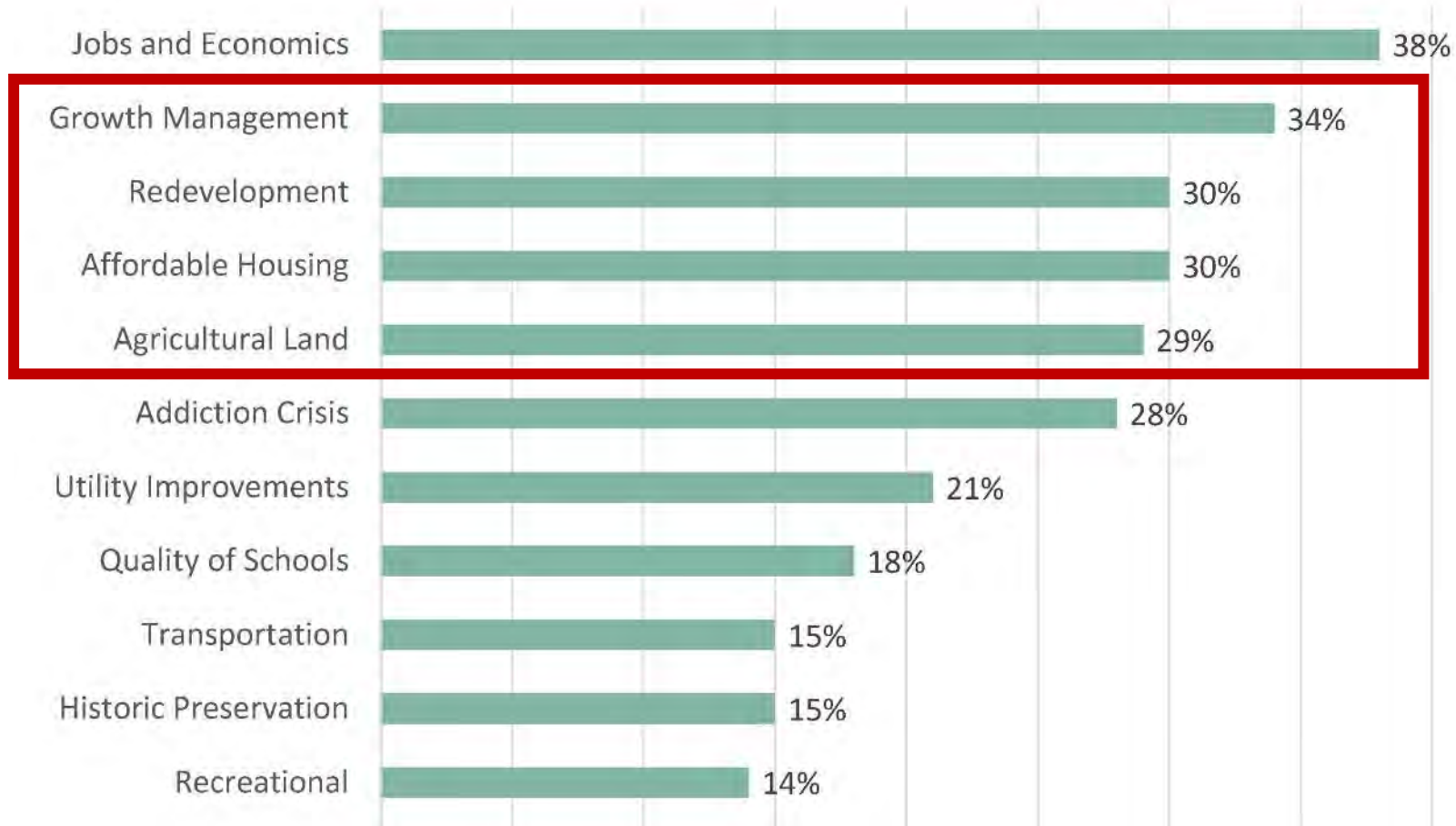
Adopted
September, 8
2020

Major Discussion Topics

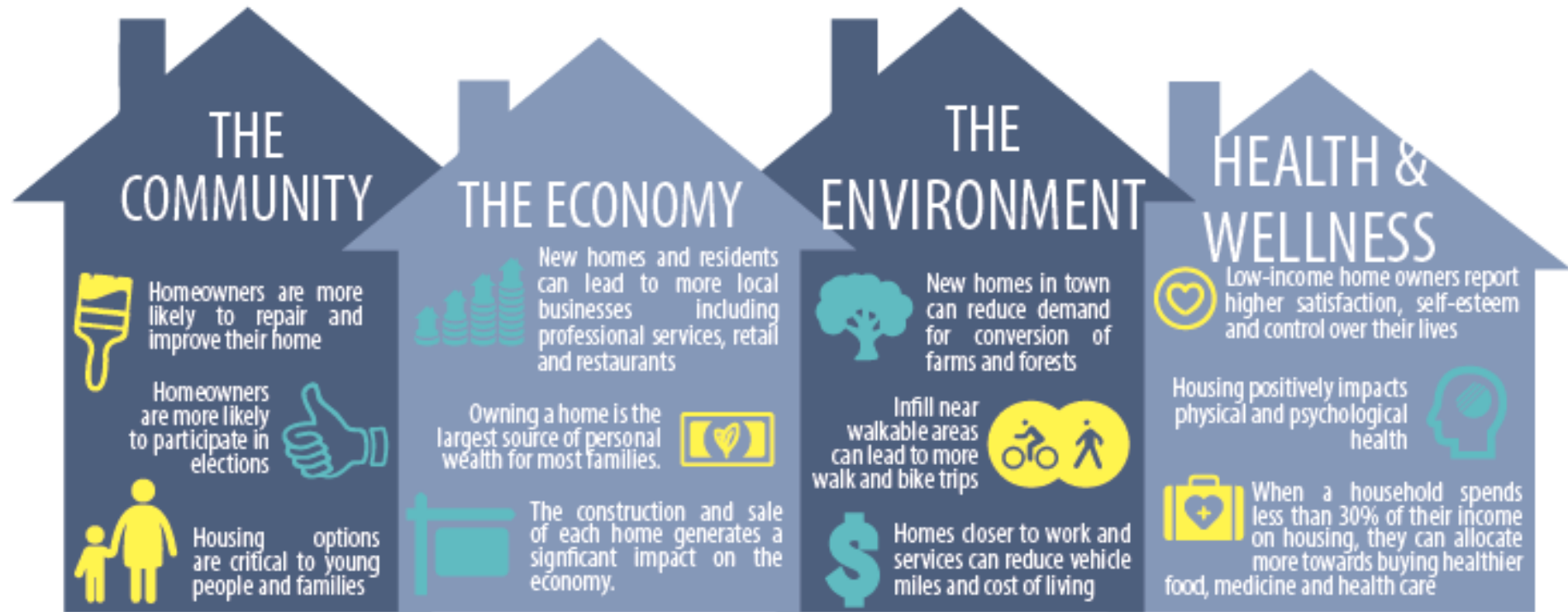
- Jobs/Economic development
- Housing need and affordability
- Growth management and environmental protection
- Infill and redevelopment
- Town character

COMPREHENSIVE LAND USE PLAN

The Most Pressing Issues Facing Waynesville Are...



Housing is Key



The graphic above illustrates the importance of housing to the success of the Town of Waynesville and the myriad impacts that housing options and home ownership can have on the community, the economy, the environment and health.

Smart Growth Principles carried over from 2020 Plan

*Smart growth is an approach to development that encourages a **mix of building types and uses** in walkable centers and **prioritizes infill** over urban sprawl to **avoid negative impacts on natural systems**.*



Waynesville Decennial Census:

2020: 10,140 residents 2010: 9,869 residents = 2.7% Increase
(not including seasonal or part time residents)

-National average: 7.4% for the last decade

-North Carolina +9.5% for the last decade

-Median Household Income in 2020 was \$40,911

Housing in Haywood County (MLS):

Year	Average Home Sales Price*
2020	\$301,606
2021	\$357,768
2022	\$379,990

“Haywood County home sales in February 2023 declined 27.3 percent to 56 homes sold, compared to 77 in February 2022. However, buyer demand is up 15.2 percent year-over-year. . . .New listings indicated seller confidence was down, as sellers listed 66 homes for sale compared to 77 homes in February 2022. . . . Both the median sales price (\$356,900) and the average sales price (\$438,521) increased 8.5 percent and 23.8 percent year-over-year respectively, while the average list price increased 12.7 percent to \$424,162.” (Canopy MLS Report for February, 2023)

Major Projects Approved by Planning Board since Comp Plan Adoption in 2020

2021:

1. **84- unit multi-family development** site plan off Howell Mill Rd. (RC-NR)
2. **Corporate manufacturing expansion**, conditional district amendment at 75 Giles Place (CI)
3. **60-unit multi-family development** conditional district at 104 Locust Drive (PC-NR)
4. **8-unit cottage development conditional district/ demo of hotel** at Waynesville Country Club (CC-RL)
5. **115 single family homes major subdivision** off Sunnyside Road-at Queen's Farm (RC-NR)
6. **14-unit townhome development** at Richland and Church Street (MS-NR)
7. **150- unit multi-family development SUP** at 1426 Howell Mill Road (HM-UR)

2022:

1. **60-unit multi-family development** off Preservation Way (WS-NR)
2. **59-unit townhome** units at Allison Acres (EW-UR)
3. **Shining Rock Classical Academy** 3-story building expansion and 2 additional parking lots D-RM

2023 (as of 4/2023):

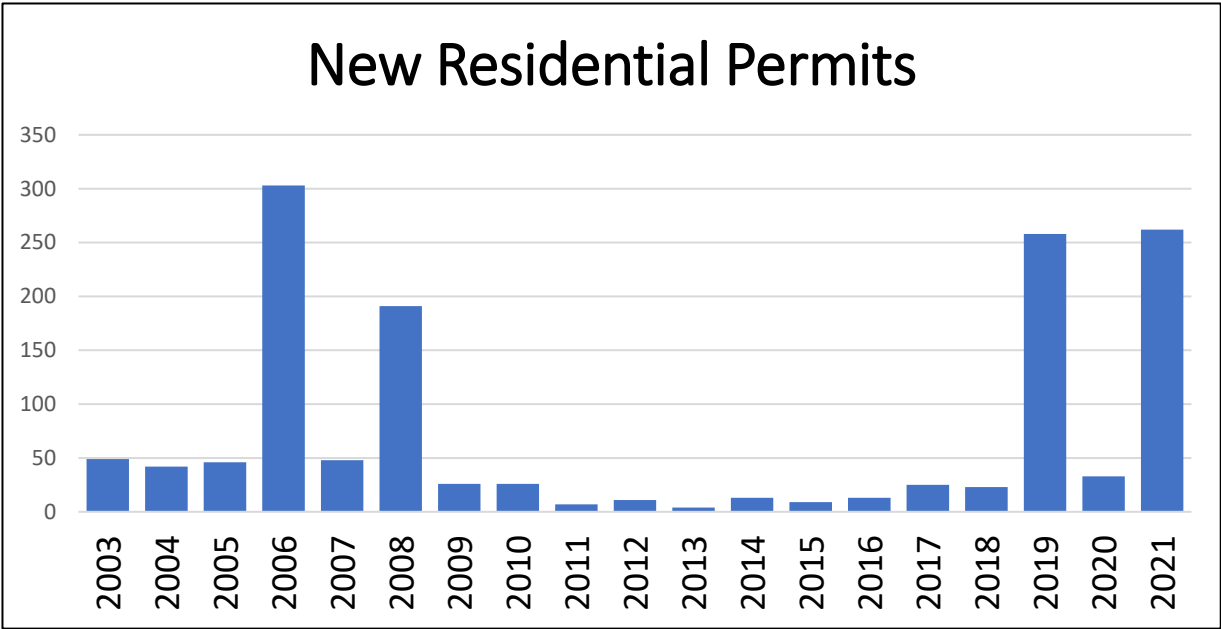
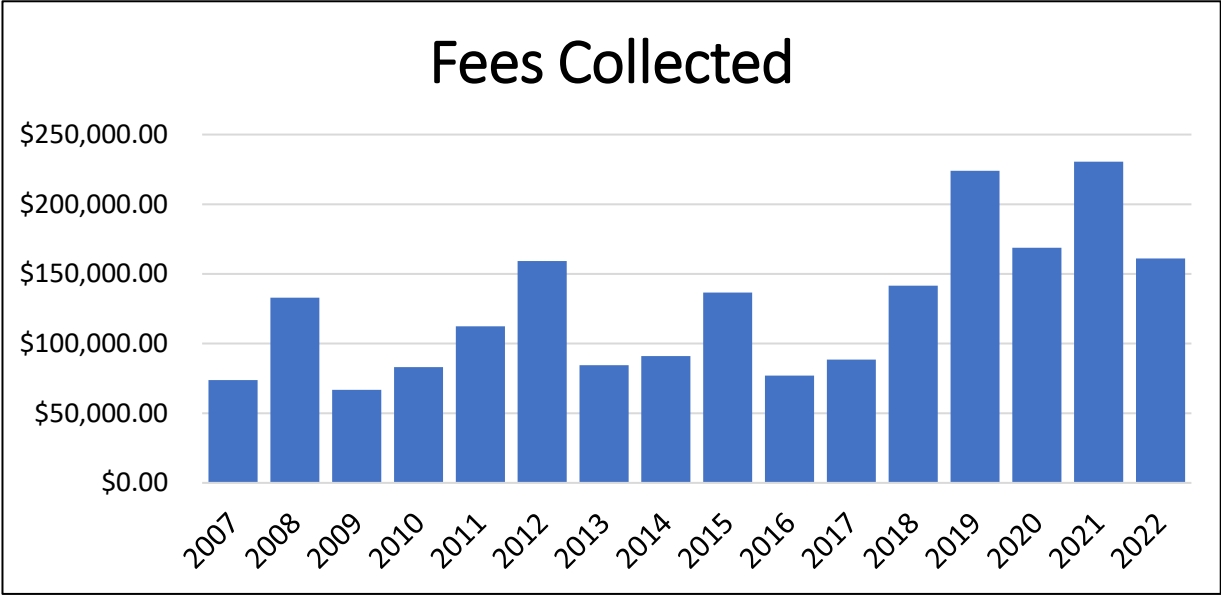
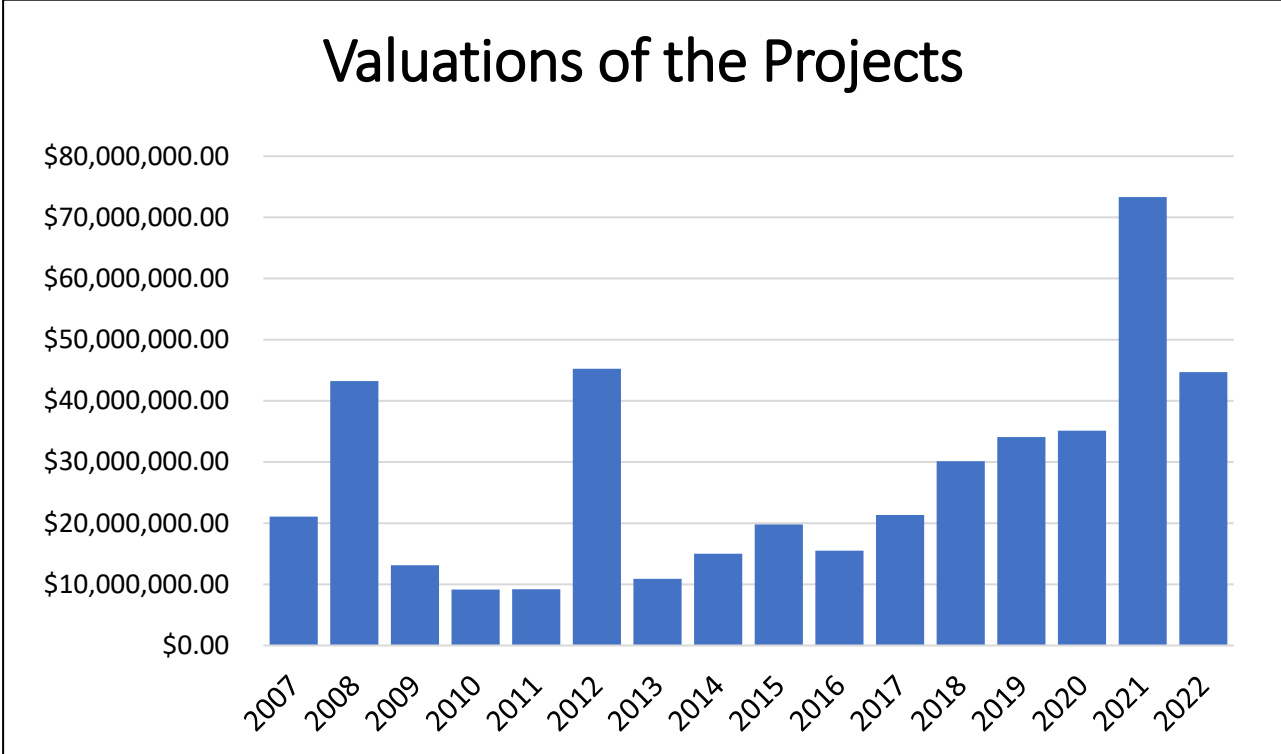
1. **Renovation of Haywood County Detention Facility** and parking lots (RC-CD)

Notes: **This totals 1,235 new units which are not yet built.*

**In 2019, Town approved 210 unit Mountain Creek Apartments*

Yearly Valuation, Permit, and Fee Summary

2007-2022 Calendar Years



Plan Goals for Area of Discussion

- Goal 1: Continue to **promote smart growth** principles in land use planning and zoning.
- Goal 2: **Create a range of housing opportunities** and choices.
- Goal 3: **Protect and enhance** Waynesville's **natural resources**.

Implementation Analysis:

- *Protect steep slopes, mountains, and floodplain;*
- *Limit extent of water and sewer service;*
- *Designate growth areas near existing infrastructure (railroad corridor, major roadways, redevelopment of existing sites, residential infill);*
- *Update and clarify Land Development Standards;*
- *Housing development within allowable zoning*

Regulatory Changes Since Comp Plan Adoption

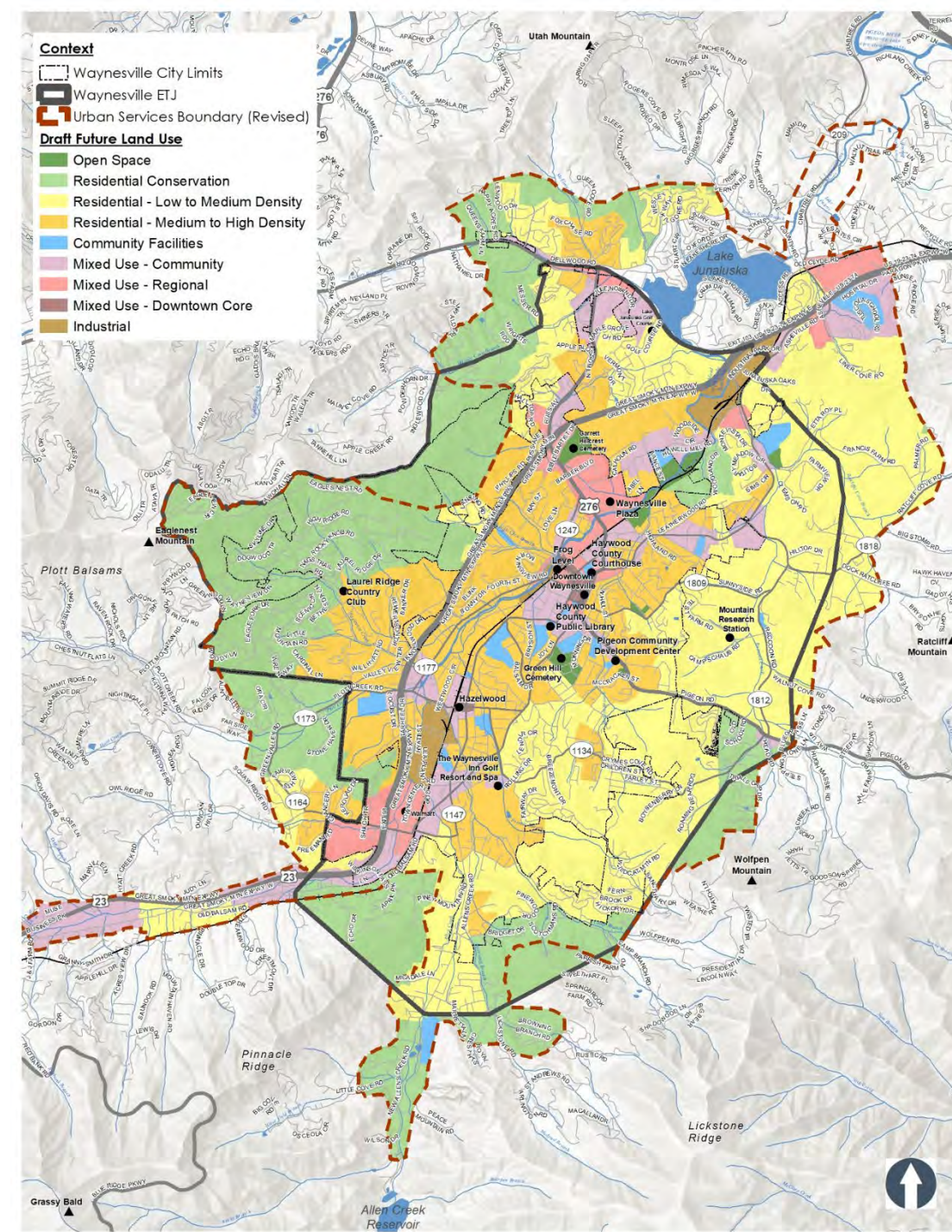
- **Land Development Standards updated for 160D compliance**
- **Lowered TIA requirement**
- **Buffer requirements for major subdivisions**
- **Updated roadway and driveway standards**
- **Updated stormwater requirements (more coming soon)**
- **Cottage and Conservation options introduced**
- **Civic space requirements increased**
- **Required neighborhood meetings**

Current and Future Study:

- *Railroad Corridor Overlay or Zoning District*
- *Short Term Rentals – impact and potential regulation*
- *Future Land Use Map and Current Zoning discrepancies*

Future Land Use Map

- **Accommodate existing development and/or zoning (i.e. Walmart / Best Buy)**
- **Encourage infill and redevelopment**
 - Downtown Core: Downtown, Frog Level and Hazelwood
 - Railroad corridor to US 74 / 23
 - Great Smoky Mountains Expressway / Old Balsam Road (MXU areas)
 - Med/High Density areas
- **Residential Conservation Area**



Future Land Use Map Less Intense Areas



Open Space

This designation is best suited for environmentally sensitive (floodplain, steep slopes) or preserved lands or passive recreational uses. In most instances, such land is to be preserved in its natural state or minimally developed for an intended recreational use. These areas should be well-connected to schools and neighborhoods. Passive use neighborhood and community parks, greenways, trails, community centers and cemeteries are found here.



Residential Conservation

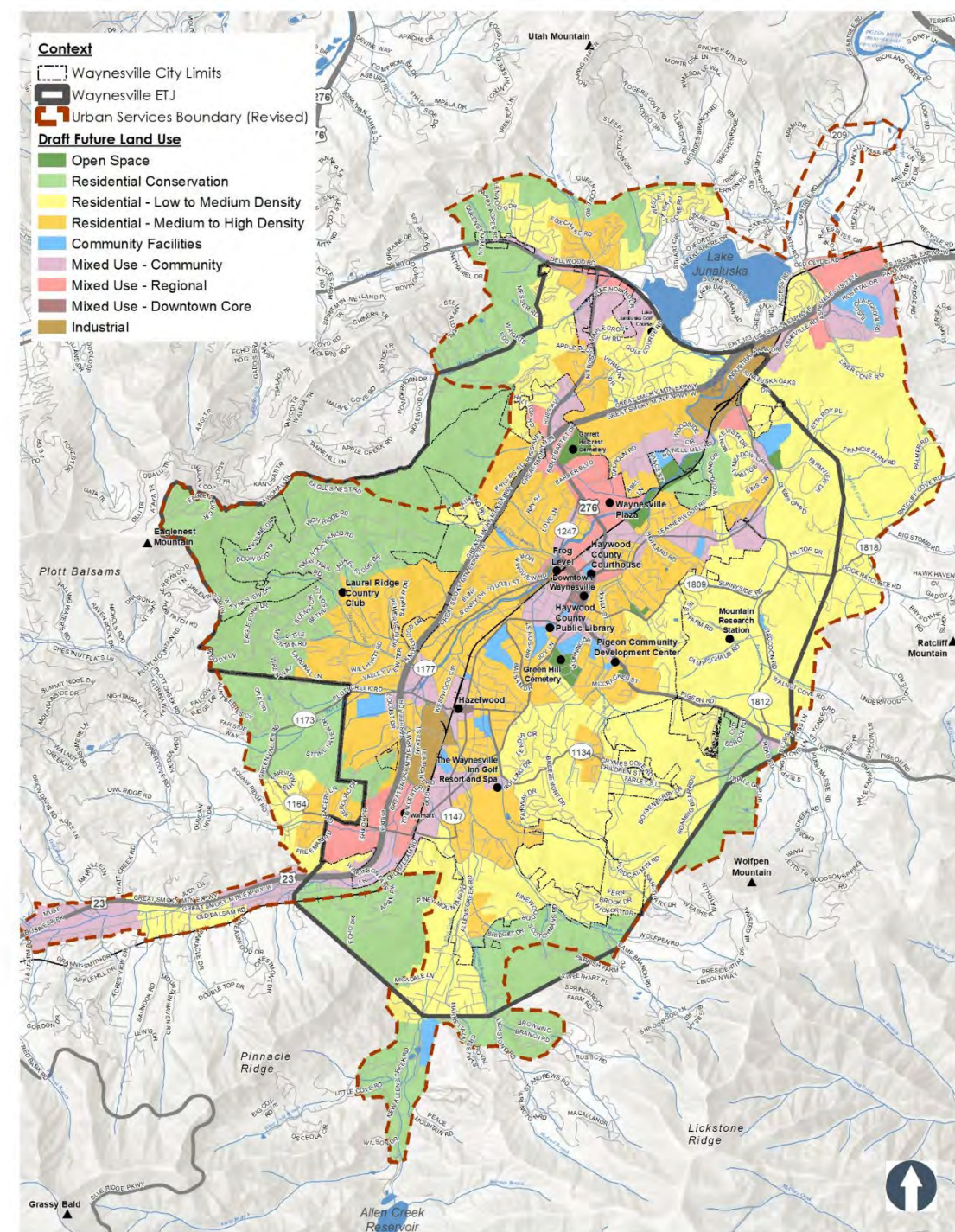
Best suited for low density residential development that is clustered or of a conservation design. Generally these areas contain steep slopes and / or working agricultural lands. These areas may have narrow streets and may or may not be connected to water and sewer utilities. Low Impact Development (LID) techniques should be encouraged to reduce stormwater runoff and development should be clustered away from resources.



Residential - Low to Medium Density

This designation should be located within the urban service boundary. The roadway network is not likely to accommodate higher density development. Types of development include:

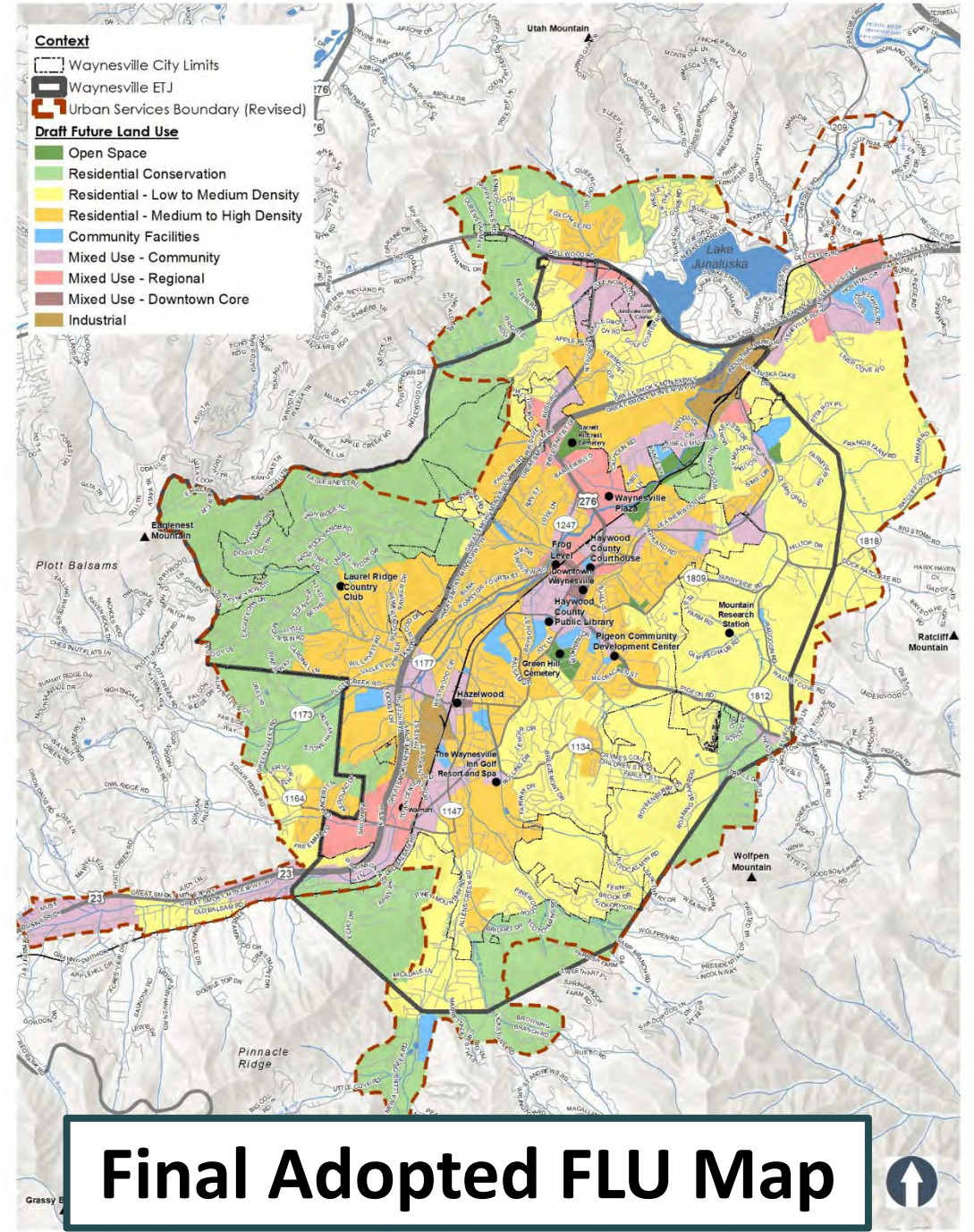
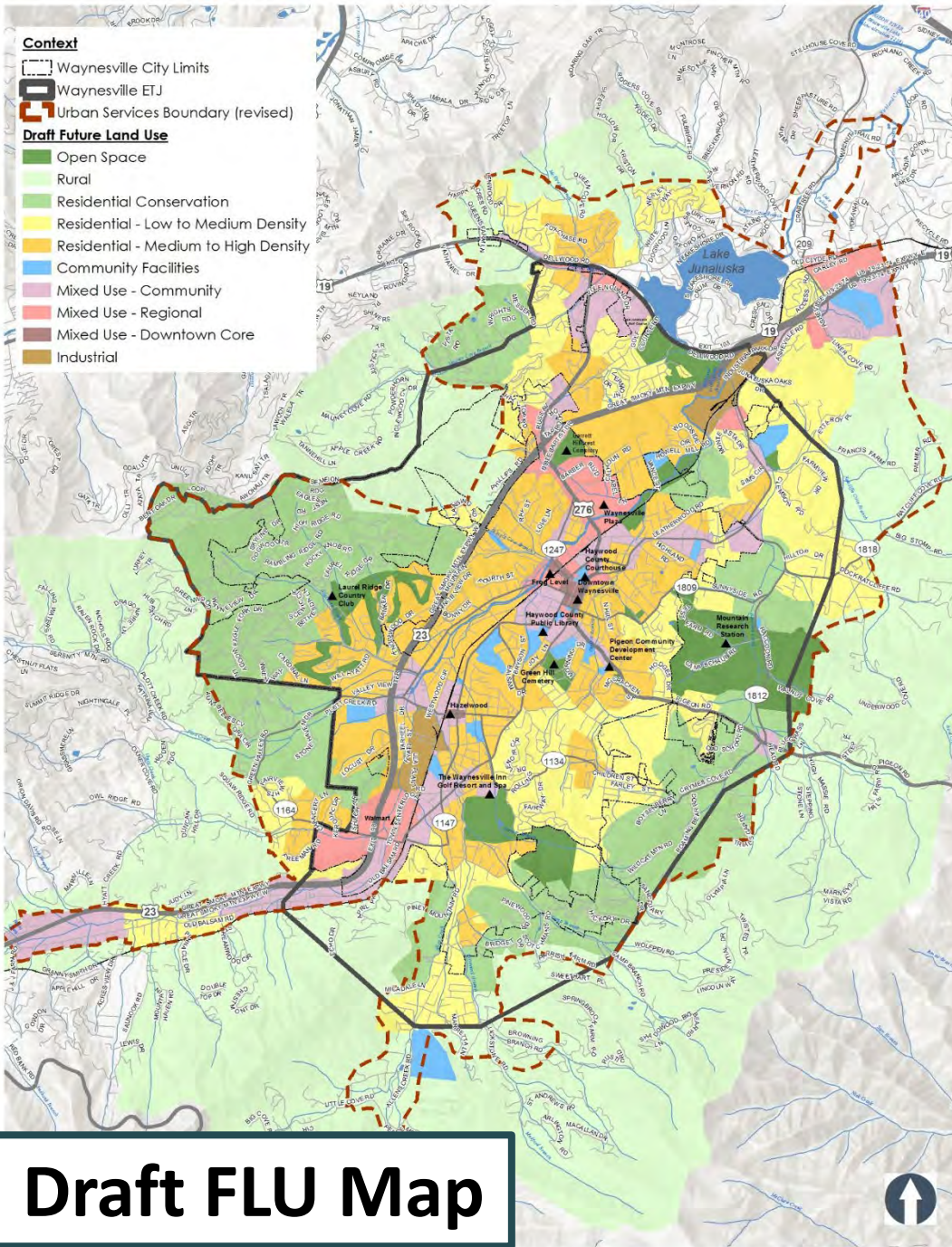
- Single family uses at average densities of 3-4 units/acre, occasional small-scale attached housing types
- Compatible development such as educational, civic, and faith-based uses, as well as parks, etc.



Future Land Use Map Density Recommendations

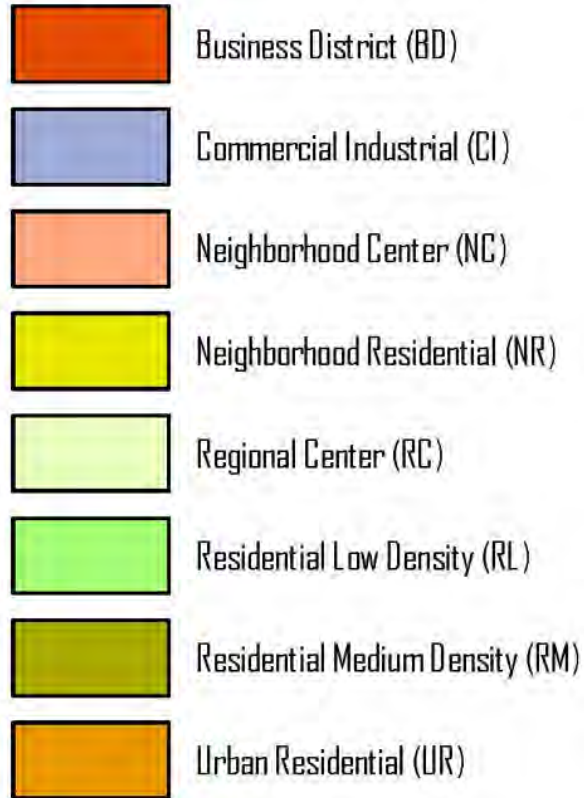
Character Area	Description / Unit Type	Dwelling Units Per Acre (DUA)*
Residential Conservation	Low density residential development that is clustered or of a conservation design.	No density specified in adopted plan – originally recommendations was > 2 units/acre
Residential – Low to Medium Density	Single family uses at average densities of 3-4 units/acre, occasionally small-scale attached housing.	3-4 units/acre
Residential – Medium to High Density	Located on lands suitable for higher density residential development that are readily accessible and where utilities are available.	5-10 units/acre

**Gross Density*

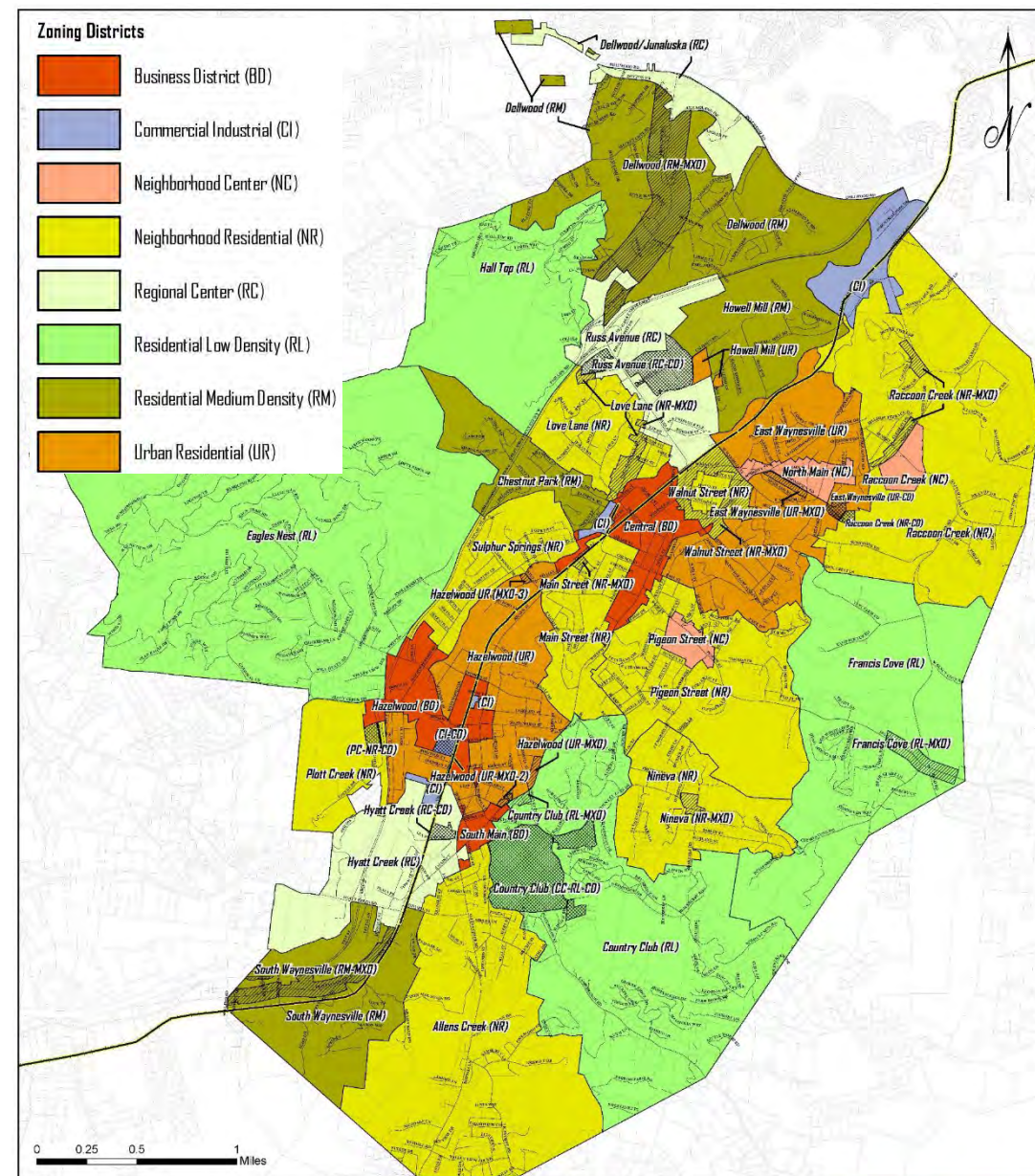


Zoning Framework

Zoning Districts

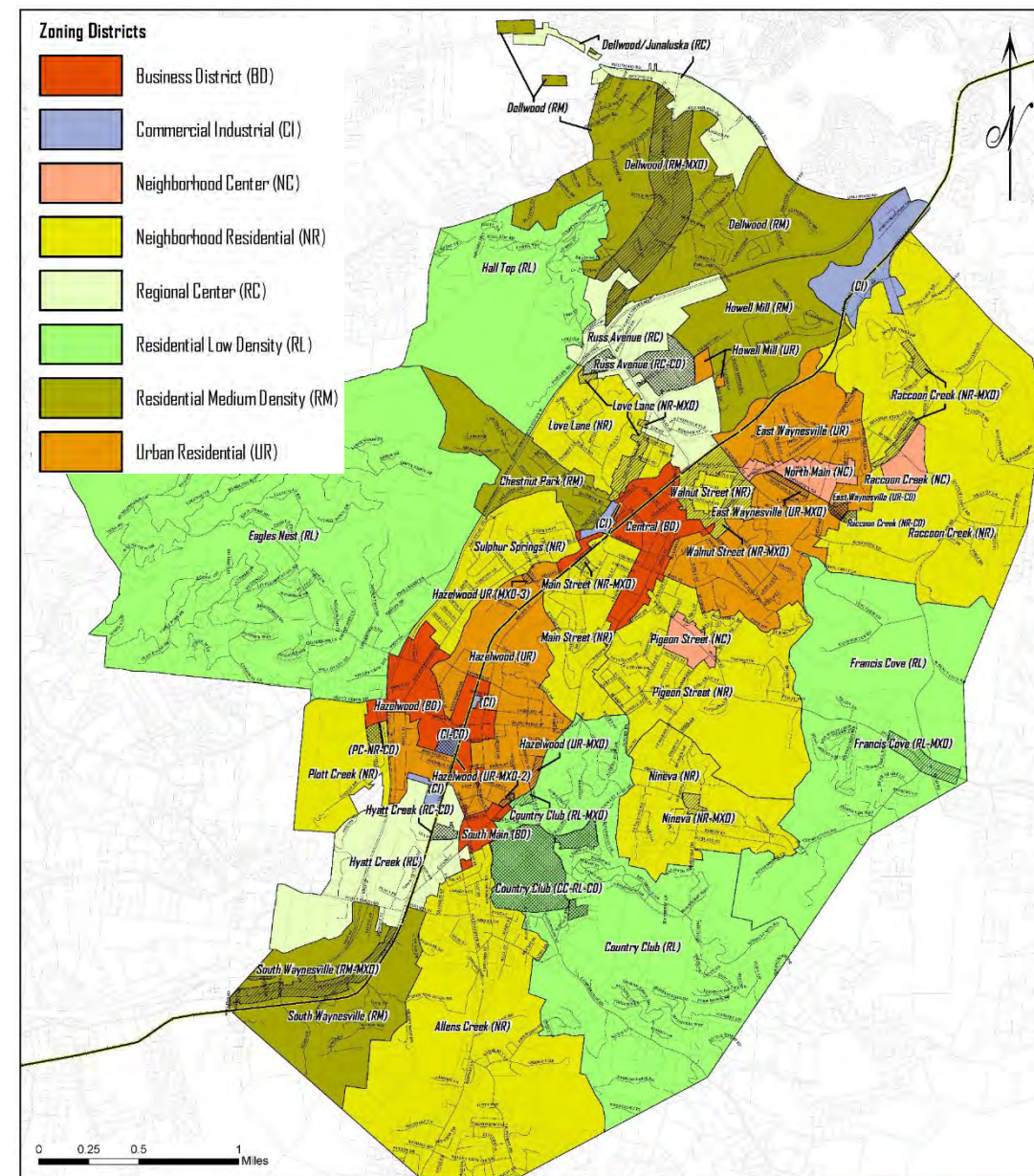


Cross-hatched areas are mixed-use overlays



Zoning Framework

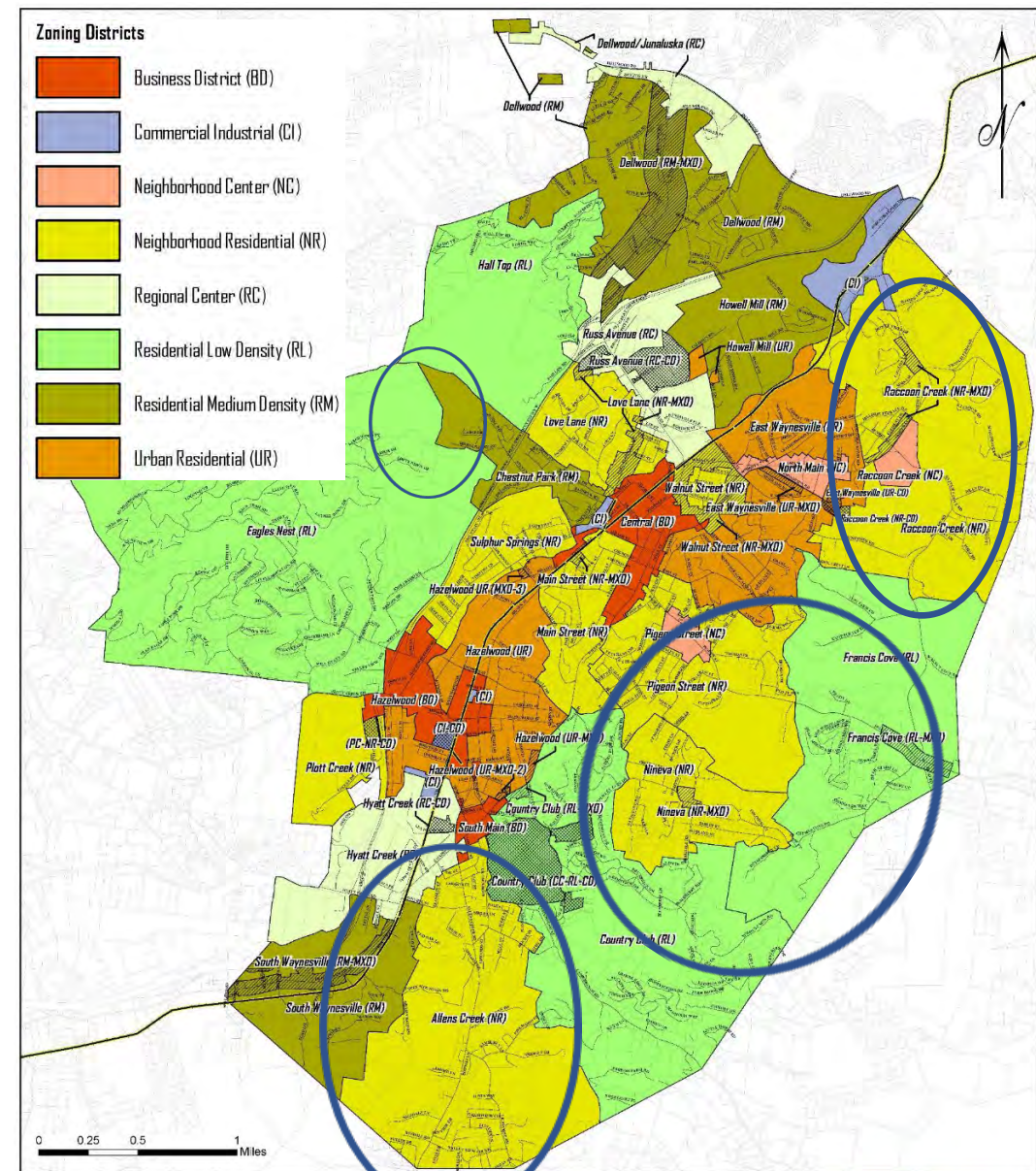
- **8 Base Districts**
- **Density**
 - RL 6 units/acre (12 w/SUP); min .5 acre
 - RM 8 units/acre (12 w/SUP); min .25 acre
 - NR 10 units/acre (16 w/SUP); min .16 acre
 - UR 16 units/acre (24 w/SUP); min .16 acre
 - No density maximums or min acreage in Com. or Ind.
- **Multi-family allowed, except for RL (only townhomes allowed), HM-RM, SS-NR,**
- **Civic / Recreation Space**
- **Cluster / Conservation Option**
- **LDS Approval process and regulations**



Future Land Use / Zoning Comparison

Differences between allowable density in existing zoning, and Comp Plan recommendations in parts of Raccoon Creek, Allen's Creek and Chestnut Park.

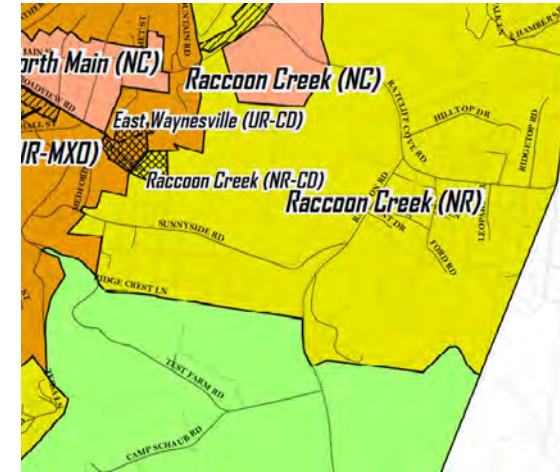
- NR Zoning allows 10-16 units/acre
- RL Zoning allows 6 units/acre
- Comp Plan FLU Map recommends residential conservation or low to medium (3-4 units/acre)
- Chestnut Park (RM) extends past Urban Services Boundary



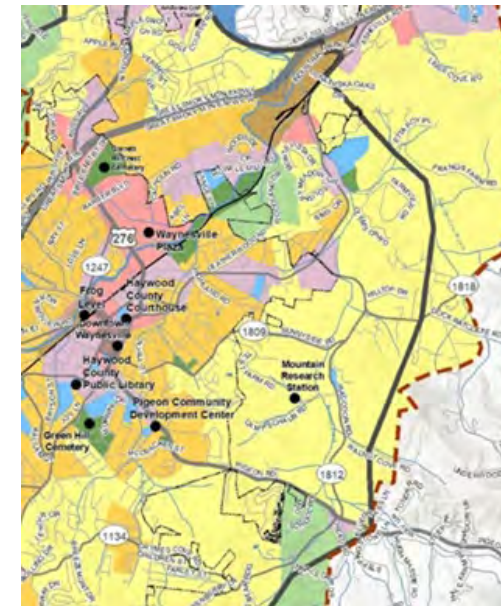
Future Land Use / Zoning Comparison

Example #1:

- **Neighborhood Residential (NR)**
 - 10 dua max / 16 dua w/SUP
 - 1/6 acre min lot size
 - Allows multi-family
 - Open Space of 15% > 61 lots
- **FLU Map – Residential Low to Medium Density**
 - 3-4 units/acre (gross density)
- **Parts of Raccoon Creek and Allen's Creek Districts**



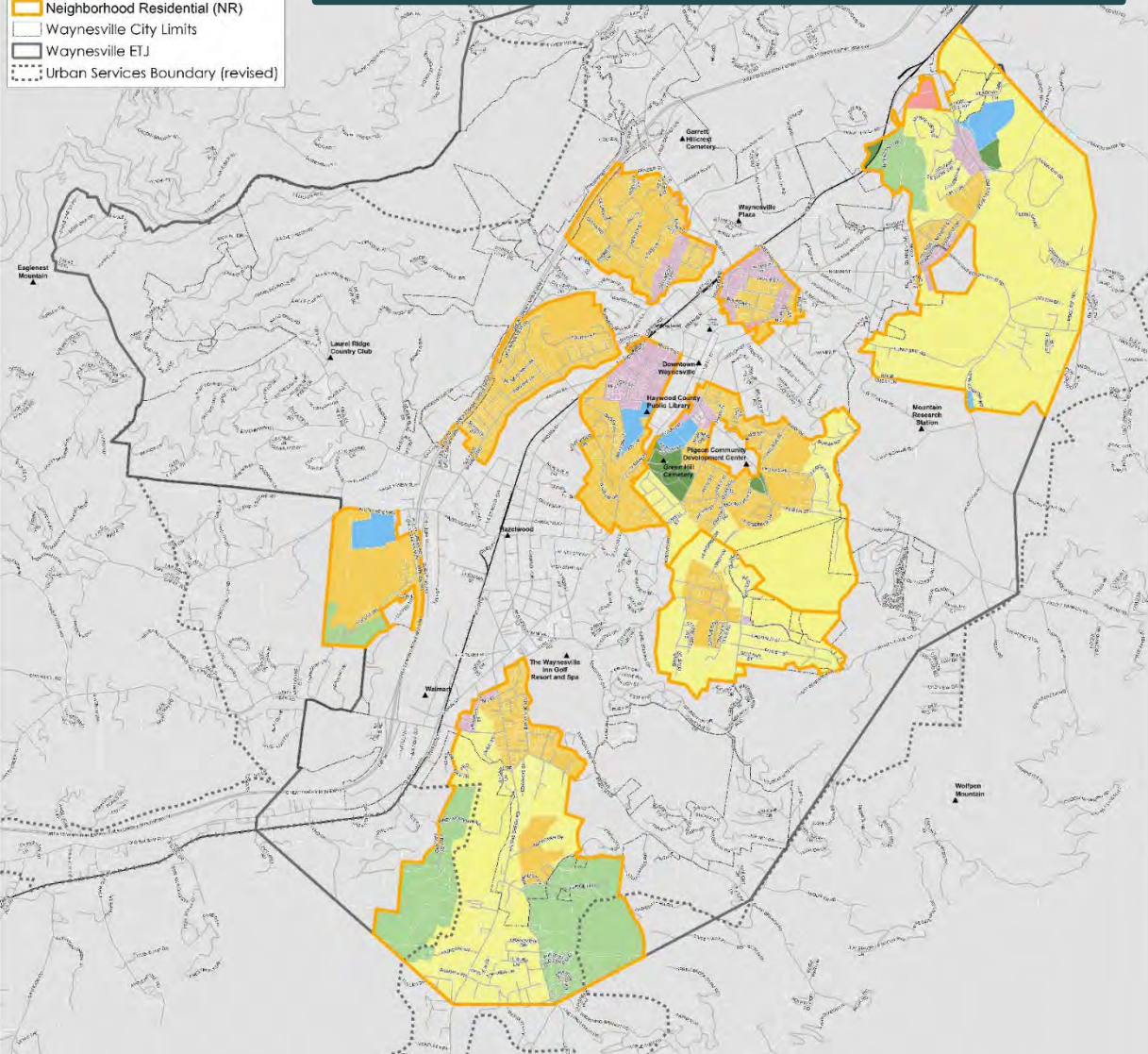
Zoning Map



FLU Map

- Context**
- ▲ Local Landmarks
 - Draft Future Land Use**
 - Open Space
 - Residential Conservation
 - Residential - Low to Medium Density
 - Residential - Medium to High Density
 - Community Facilities
 - Mixed Use - Community
 - Mixed Use - Regional
 - Mixed Use - Downtown Core
 - Industrial
 - Neighborhood Residential (NR)
 - Waynesville City Limits
 - Waynesville ETJ
 - ⋯ Urban Services Boundary (revised)

FLU Map in NR Zoning Districts Only



Takeaways

- **UR and NR Zoning appropriate for urbanized areas of Med-High Density.**
- Allowance for 10 du/a, including multi-family **may not be in-line with Low to Medium Res Comp Plan / FLU Map**
- **Guidance needed to determine vision** for these areas, and if zoning or FLU map changes should occur.

Example Development

Hazelwood

- 0.18 Acre lot
- ~5 DUA
- Zoning: UR
- FLU: Med-High Res



Report For

MOODY, CHARLES
MOODY, KIMBERLY
PO BOX 1113
LK JUNALUSKA, NC 28745-1113

Account Information

PIN: 8605-91-0924

Legal Ref: 1071/1917

Add Ref: A/90

Site Information

BROOKWOOD
DWELLING

550 CAMELOT DR

Heated Area: 1006

Year Built: 1945

Total Acreage: 0.18

Township: Town of Waynesville

Site Value Information

Land Value: \$15,100

Building Value: \$105,000

Market Value: \$120,100

Deferred Value: \$0

Assessed Value: \$120,100

Sale Price: \$60,000

Sale Date: 9/14/2022



1 inch = 200 feet
April 4, 2023

Disclaimer: The maps on this site are not surveys. They are prepared from the inventory of real property found within this jurisdiction and are compiled from recorded deeds, plats and other public records and data. Users of this site are hereby notified that the aforementioned public primary information sources should be consulted for verification of any information contained on these maps. Haywood county and the website provider assume no legal responsibility for the information contained on these maps.

Example Development

Short Street

- 0.18 Acre lot
- ~5 DUA
- Zoning: NR
- FLU: Med-High Res



Report For

COFFEY, ELEANOR
COFFEY, KRISTIN
165 VALLEY VIEW TER
WAYNESVILLE, NC 28786

Account Information

PIN: 8615-36-8260

Legal Ref: 481/2117

481/768

Add Ref:

Site Information

DWELLING

88 SHORT ST

Heated Area: 1540

Year Built: 1923

Total Acreage: 0.18

Township: Town of Waynesville

Site Value Information

Land Value: \$24,300

Building Value: \$163,200

Market Value: \$187,500

Deferred Value: \$0

Assessed Value: \$187,500

Sale Price: \$0

Sale Date: 9/14/2000



1 inch = 100 feet

April 4, 2023

Disclaimer: The maps on this site are not surveys. They are prepared from the inventory of real property found within this jurisdiction and are compiled from recorded deeds, plats and other public records and data. Users of this site are hereby notified that the aforementioned public primary information sources should be consulted for verification of any information contained on these maps. Haywood county and the website provider assume no legal responsibility for the information contained on these maps.

Density Examples in Waynesville Neighborhoods

PROPERTIES ON .16 ACRE
MINIMUM LOT SIZE FOR 12
ZONING DISTRICTS (UR, NR)



Density Examples in Waynesville Neighborhoods



Density Examples in Waynesville Neighborhoods

PROPERTIES ON .50 ACRE

MINIMUM LOT SIZE FOR 4
ZONING DISTRICTS (RL)



.16 ac



.25 ac



.5 ac



1 ac



Recent Developments / Trends / Issues

- **Preservation Way / Multi-family**

- Where is multi-family appropriate?
- Design requirements
- Approval processes

Development Statistics

- 7.1 Acres, 60 Units
- 8.45 units/acre (gross density)
- 3.1 acres of open space provided



Residential Conservation Area

○ Residential Conservation Area

- Encouraged conservation design in areas with steep slopes, high quality wildlife habitat, views and vistas (i.e. upper parts of Eagles Nest, Allens Creek Area (west of Allens Creek))
- More accurately reflects development constraints (i.e. steep slopes) and areas where clustering new development could help preserve natural assets.
- Many areas classified as Low to Medium or Medium to High Density in zoning, but actual density should be lower.



Conventional Development



Conservation Design

Conservation Design (p. 30)

LU-3 Promote conservation design in new residential developments

A. Allow conservation or cluster development design as an alternative to large lot subdivisions or other development in areas designated Residential Conservation.

- Conservation design should reduce cut and fill slopes, follow the natural contours of the land, apply low-impact stormwater design, and preserve open space or sensitive habitats (e.g., water features, woodland stands, meadows).
- Update the LDS to provide flexibility in density, setbacks and unit types to preserve views and agricultural lands on the edges of town. This approach should allow new development to meet current low density designations while creating open space by clustering of structures.

Visualizing Density / Precedent

For RL District

- **Eagles Nest**

Development Statistics

- 43 Acres, 51 Properties
- 1.186 units/acre (gross density at build out)



Visualizing Density / Precedent

For RL District

- Sweetgrass in Blowing Rock, NC



THIS PLAN ILLUSTRATES A GENERAL PLAN WHICH IS SUBJECT TO REVIEW BY ANY THE JURISDICTIONS, REGULATIONS AND ORDINANCES. ILLUSTRATIONS ARE FOR INFORMATION ONLY AND ARE NOT INTENDING TO BE BOUND.

Development Statistics

- 278 Acres, 180 Residences, Including attached product
- 0.64 units/acre

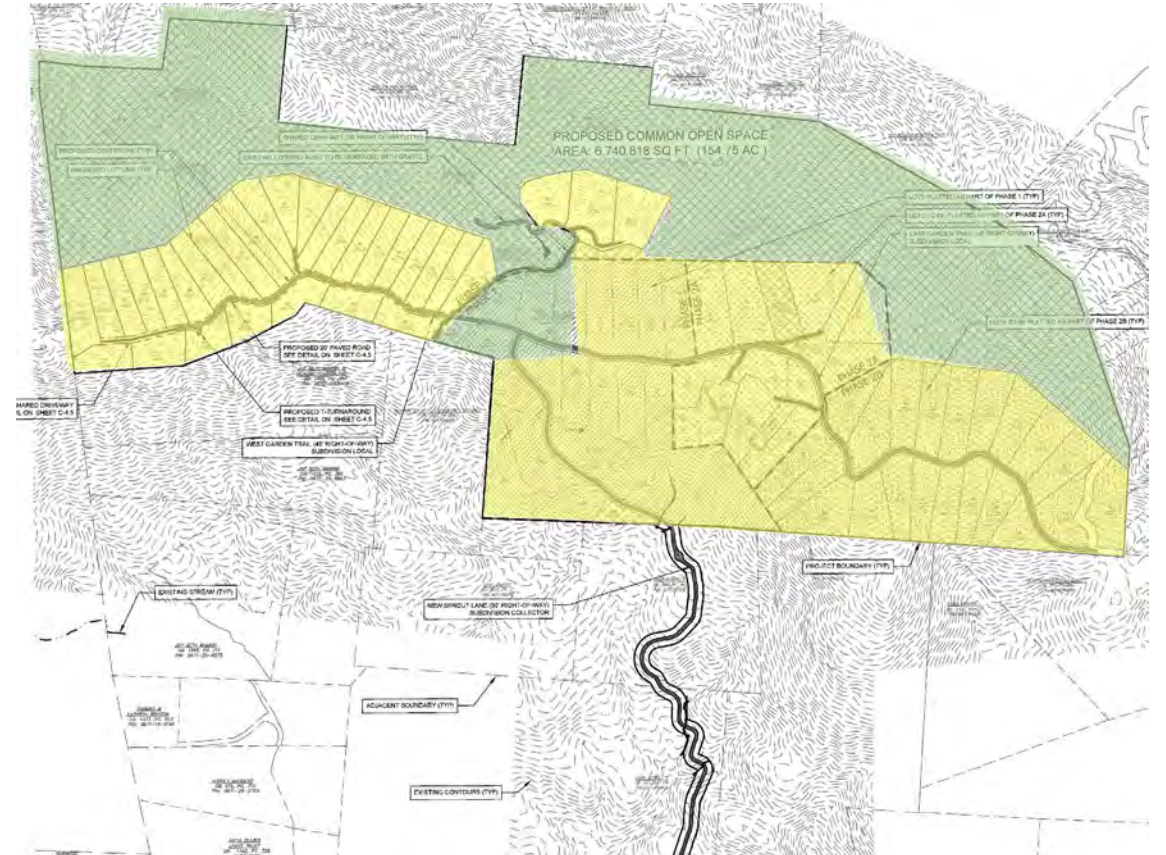
Visualizing Density / Precedent

For RL District

- **Sprout Mountain in Henderson County, NC**

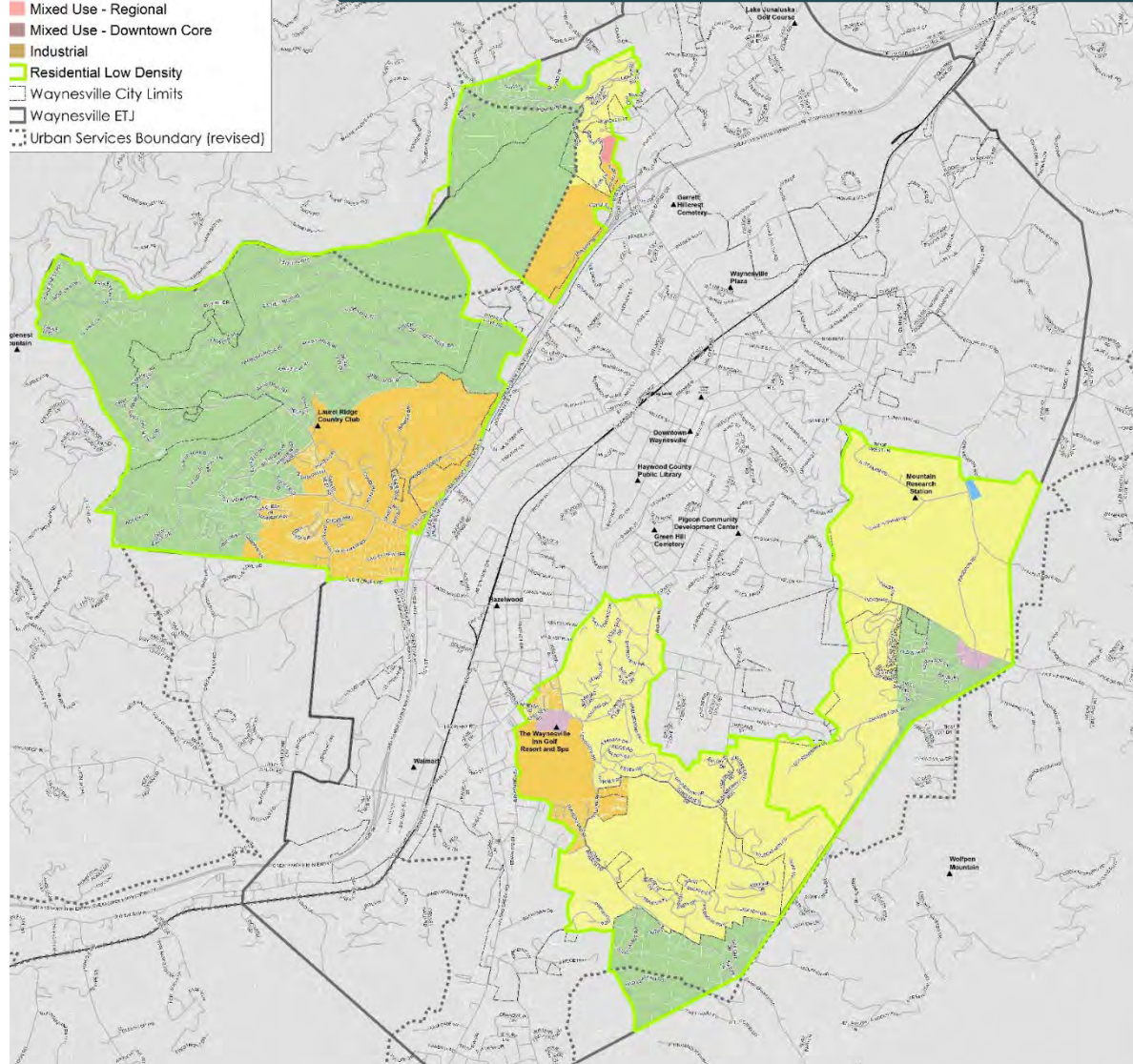
Development Statistics

- 377 Acres, 83 Residences,
- 41% Open Space
- 0.22 units/acre



FLU Map in RL Zoning Districts Only

- Context**
- Local Landmarks
 - Future Land Use**
 - Open Space
 - Residential Conservation
 - Residential - Low to Medium Density
 - Residential - Medium to High Density
 - Community Facilities
 - Mixed Use - Community
 - Mixed Use - Regional
 - Mixed Use - Downtown Core
 - Industrial
 - Residential Low Density
 - Waynesville City Limits
 - Waynesville ETJ
 - Urban Services Boundary (revised)



Takeaways

- RL Zoning appropriate for some areas (Low-Med Density, Med-High Density)
- **Allowance for 6 du**, including townhomes may not be in-line with Residential Conservation on FLU Map
- **But clustering of 6 units within 1 acre may be appropriate if part of conservation or cottage design with land preservation.**

Options: Density, Building Type, Cluster Standards

A. Do Nothing Option

B. Density changes

- Lower allowable density to existing districts (NR and/or RL)
- Downzoning precedent (Huntersville) / Potential issues

C. New District

- Create and apply to Low-Med Density areas on FLU map, max density of 2-4 DUA, could incorporate site design standards or incentives

D. Multi-family Allowances

- Could allow only with conservation design in NR/RL Districts

E. Civic / Open space requirements

- Increase open space requirements in NR and RL
- Adjust balance between passive open space and active recreation space, less active space could be required in more undeveloped areas
- DUA < 2 exempt from civic space reqs...

F. Cluster standards

- Adjust existing structure
- Require in certain areas or increase incentives (i.e. MF)

Discussion

- **What is vision for development in Low-Medium Residential and/or Residential Conservation areas on FLU Plan?**
- NR Zoning District
 - *Good things*
 - *Potential changes*
- RL Zoning District
 - *Good things*
 - *Potential changes*
- Other topics / parking lot



Public Comment

Ground-rules

- Up to 3 minute per person
- State your name and where you live
- Be respectful and constructive
- Remember this is a discussion, not a debate

