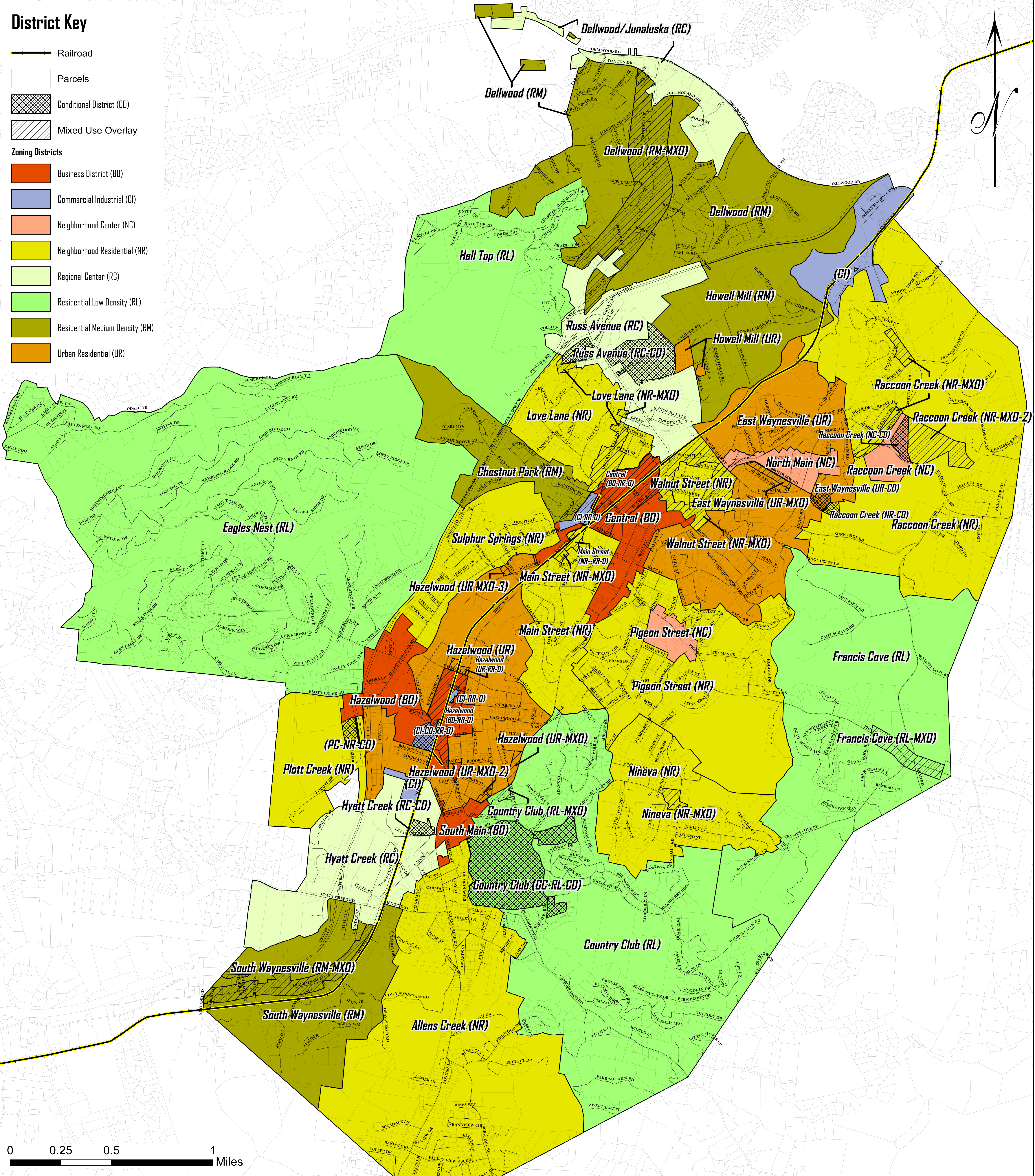


### District Key

- Railroad
- Parcels
- Conditional District (CD)
- Mixed Use Overlay
- Zoning Districts**
- Business District (BD)
- Commercial Industrial (CI)
- Neighborhood Center (NC)
- Neighborhood Residential (NR)
- Regional Center (RC)
- Residential Low Density (RL)
- Residential Medium Density (RM)
- Urban Residential (UR)



# Official Land Development Map

# Town of Waynesville, North Carolina



In accordance with the Town of Waynesville Land Development Standards adopted April 12, 2011 (LDS Section 2.1)

Development Services, July 19, 2024